

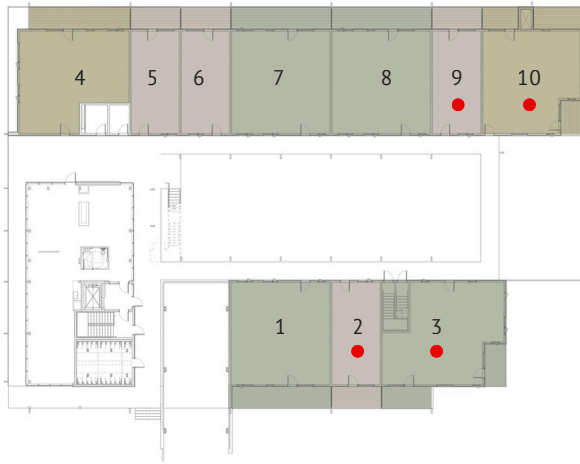
1 BEDROOM

2 BEDROOM

3 BEDROOM

L = LOFT

● SOLD



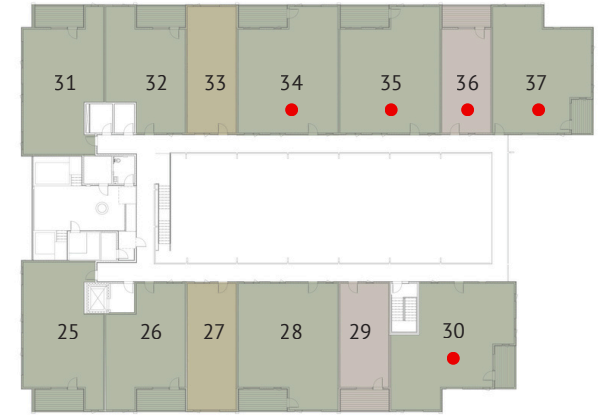
LEVEL 1

UNIIT	UNIT TYPE	BEDS	BATHS	PRICE
1	3-01	3	2	\$1,100,000
2	1-01	1	1	Sold!
3	3-03	3	2	Sold!
4	2-01	2	2	\$1,000,000
5	1-01	1	1	\$580,000
6	1-01	1	1	\$600,000
7	3-01	3	2	\$1,150,000
8	3-01	3	2	\$1,200,000
9	1-01	1	1	Sold!
10	2-02	2	2	Sold!



LEVEL 2

UNIIT	UNIT TYPE	BEDS	BATHS	PRICE
11	2-03	2	2	\$960,000
12	2-04	2	2	\$850,000
13	1-02	1	1	\$700,000
14	3-02	3	2	\$1,200,000
15	1-01	1	1	\$650,000
16	3-04	3	2	Sold!
17	2-06	2	2	\$950,000
18	2-03	2	2	\$960,000
19	2-04	2	2	\$870,000
20	1-02	1	1	\$700,000
21	3-02	3	2	\$1,200,000
22	3-02	3	2	Sold!
23	1-01	1	1	\$650,000
24	2-05	2	2	Sold!



LEVEL 3

UNIIT	UNIT TYPE	BEDS	BATHS	PRICE
25	3L-01	3	2	\$1,300,000
26	3L-02	3	2	\$1,230,000
27	2L-01	2	1	\$950,000
28	3L-04	3	2	\$1,350,000
29	1L-01	1	1	\$770,000
30	3L-03	3	2	Sold!
31	3L-01	3	2	\$1,300,000
32	3L-02	3	2	\$1,230,000
33	2L-01	2	1	\$950,000
34	3L-04	3	2	Sold!
35	3L-04	3	2	Sold!
36	1L-01	1	1	Sold!
37	3L-05	3	2	Sold!