

2025-01-08

Spruce + Arrow Design Co.
250-814-3822
designs@spruceandarrow.ca
Unit 2, 616 3rd St. W. Revelstoke BC.



SPRUCE + ARROW
INTERIOR DESIGN STUDIO

BENCHLANDS CONDOS - SELECTIONS PACKAGE

Colour Scheme 3 - **SLATE** (*Black/Monochromatic/Moody*)



Scheme - SLATE

Spruce + Arrow Design Co.
250-814-3822
designs@spruceandarrow.ca
Unit 2, 616 3rd St. W. Revelstoke BC.



CLIENT: Northland Properties - Benchlands Condos

EMAIL: lmcintyre@revelstokemountainresort.com

DATE: 2025-01-08

For Budgeting Purposes Only

Designer's Rep/Supplier: Colby Russell @ Revelstoke United Floors - colby@revelstokeunitedfloors.ca

1 - FLOORING + TILE

V1 - VINYL PLANK



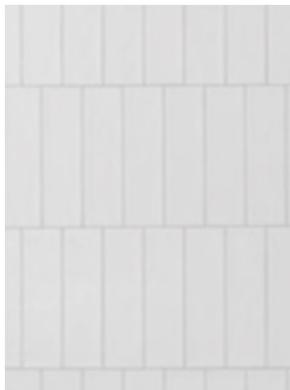
NAME: Engineered Luxury Vinyl Plank
COLOUR/FINISH: Expedition Collection - Marcona #6052
BRAND: Beaulieu
CODE: 6052
DIMENSIONS: 8.858"W x 72.047"L x 0.335" (8.5mm) total thickness
QTY: Contractor to Perform Takeoffs
NOTES: Click together system, float installation, 0.55mm wear layer
Cork backing for greater temperature and high soundproof rating
Selected as highly preferred by installers for quality + ease of installation

T1 - WALL TILE (Kitchen Backsplash)



NAME: Safi Brick
COLOUR/FINISH: White
BRAND: Ames Tile & Stone
CODE: SAFWH26
DIMENSIONS: 2" x 6"
QTY: Contractor to Perform Takeoffs
PATTERN: Brick Lay as shown
GROUT: Mapei #5077 Frost Grout
TILE EDGE: Bright White BW Schluter Edge as necessary

T2 - WALL TILE (Shower + Tub Walls)



NAME: Zellige Neo
COLOUR/FINISH: Gesso
BRAND: Daltile
CODE: ZL11
DIMENSIONS: 3" x 12"
QTY: Contractor to Perform Takeoffs
PATTERN: Offset vertical stacked lay as shown
GROUT: Mapei #5077 Frost Grout
TILE EDGE: Bright White BW Schluter Edge as necessary

T3 - FLOOR TILE *(Bathroom + shower floors)*



NAME: Forme
COLOUR/FINISH: Anthracite, matt
BRAND: Ceratec
CODE: EMLFORMo8o8MATTANTRo
DIMENSIONS: 8" x 8"
QTY: Contractor to Perform Takeoff's
PATTERN: Stacked lay
GROUT: Mapei #5047 Charcol Grout
TILE EDGE: Brushed Black Schluter edge as necessary

SHOWER + TUB DETAILS



SHOWER / TUB NICHES

NAME: Custom shower niche w/ quartz frame
COLOUR/FINISH: CT1 Quartz Frame, T2 Back tile
DIMENSIONS: Niche total size approx. 13"W x 20"H w/ 1 shelf located approx 6" from top
QTY: Contractor to Perform Takeoff's
NOTES: No tile edge necessary (quartz frame and shelf)

SHOWER BASE + THRESHOLD



NAME: Custom Tiled Shower Base
COLOUR/FINISH: T3 finish Shower Floor / CT1 Threshold Cap
DIMENSIONS: Refer to drawings
QTY: Contractor to Perform Takeoff's
NOTES: If Curb is required. Curbless is preferred

SHOWER DRAIN



NAME: Square drain - Floral - Schluter Kerdi Drain
COLOUR/FINISH: Matte Black finish
CODE: KDIF4 GRK MGS D5
DIMENSIONS: 4" square
QTY: Contractor to Perform Takeoff's
NOTES: Off set drain to be located under showerhead

Scheme - SLATE

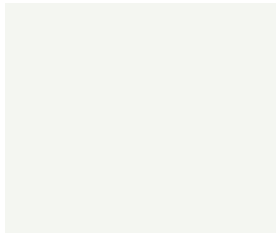
Spruce + Arrow Design Co.
250-814-3822
designs@spruceandarrow.ca
Unit 2, 616 3rd St. W. Revelstoke BC.



CLIENT: Northland Properties - Benchlands Condos
EMAIL: lmcintyre@revelstokemountainresort.com
DATE: 2025-01-08

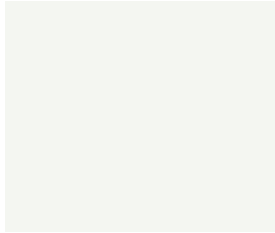
Designer's Rep/Supplier: Kaitlin @ Expressive Interiors - paint@expressiveinteriors.ca

2 - WALL FINISHES



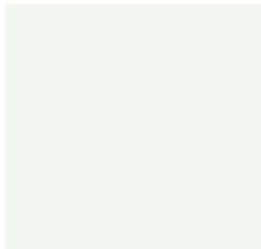
PT1 - WALL COLOUR

NAME: Regal or Ben Paint
COLOUR/FINISH: Oxford White - Eggshell Finish
BRAND: Benjamin Moore
CODE: CC-30



PT2 - DOOR, BASE + TRIM COLOUR

NAME: Regal or Ben Paint
COLOUR/FINISH: Oxford White - Satin/Pearl Finish
BRAND: Benjamin Moore
CODE: CC-30



PT3 - CEILING COLOUR

NAME: Waterborne Ceiling Paint
COLOUR/FINISH: Ceiling White 508 09, Ultra Flat Finish
BRAND: Benjamin Moore
CODE: CEIL-WH01



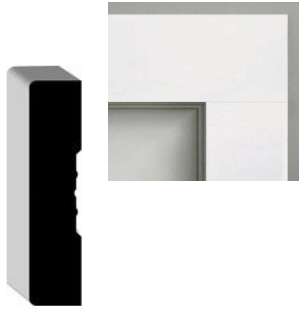
CLIENT: Northland Properties - Benchlands Condos

EMAIL: lmcintyre@revelstokemountainresort.com

DATE: 2025-01-08

3 - INTERIOR DETAILS

WINDOW TRIM



NAME: Primed MDF Casing
COLOUR/FINISH: Painted PT2
BRAND: Alexandria Mouldings
CODE: 90423
DIMENSIONS: 5/8" x 3" x 16'
QTY: Contractor to Perform Takeoff's
NOTES: Can be subbed with alternate brand equivalent if necessary
INSTALL: Mitered Corners

DOOR TRIM



NAME: Primed MDF Casing
COLOUR/FINISH: Painted PT2
BRAND: Alexandria Mouldings
CODE: 90423
DIMENSIONS: 5/8" x 3" x 16'
QTY: Contractor to Perform Takeoff's
NOTES: Can be subbed with alternate brand equivalent if necessary
INSTALL: Mitered Corners

BASEBOARD



NAME: Primed MDF Baseboard
COLOUR/FINISH: Painted PT2
BRAND: Alexandria Mouldings
CODE: 5128
DIMENSIONS: 1/2" x 5-1/4"
QTY: Contractor to Perform Takeoff's
NOTES: Can be subbed with alternate brand equivalent if necessary



INTERIOR DOORS

NAME: Lincoln Park 1 Panel
 COLOUR/FINISH: Solid Core,
 BRAND: Masonite
 SUPPLIER: Contractor to determine
 DIMENSIONS: Varies
 QTY: Contractor to Perform Takeoff's
 NOTES: Can be subbed with alternate brand equivalent if necessary

INTERIOR DOOR HANDLES



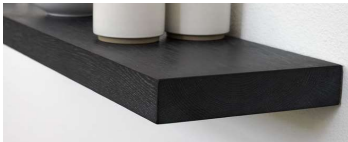
NAME: Select T-Bar Smooth Lever w/ Disk Rosette
 COLOUR/FINISH: Flat Black
 BRAND: Emtek
 CODE: 5209US19.TAUS19.SMUS19.LH, 5209US19.TAUS19.SMUS19.RH,
 C5209US19.TAUS19.SMUS19
 QTY: Contractor to Perform Takeoff's
 NOTES: Bedroom + Bathrooms - Privacy Style
 Closets - Passage or Dummy Style

DOOR HINGES



NAME: Residential Duty Steel, Plain Bearing Hinge
 COLOUR/FINISH: Flat Black
 BRAND: Contractor preferred
 DIMENSIONS: 3-1/2" x 3-1/2"
 QTY: Contractor to Perform Takeoff's

CLOSET DETAILS



NAME: Custom floating shelves w/ rods below
 SHELVES: Custom floating shelves
 MATERIAL: Slab style textured melamine - match MW2
 FINISH: MW2
 SIZE: Approx. 2"H x 14"D
 QTY: Contractor to preform takeoff
 RODS: Heavy duty hanging rod
 MATERIAL: Black
 SIZE: approx. 1-1/2" heavy-duty
 QTY: Contractor to Perform Takeoff's



MIRROR (Bathrooms)



NAME: MR802436BK
 COLOUR/FINISH: Black
 BRAND: Elegant Furniture & Lighting
 CODE: MR802436BK
 DIMENSIONS: 24"W x 36"H
 QTY: Contractor to Perform Takeoff's



CLIENT: Northland Properties - Benchlands Condos

EMAIL: lmcintyre@revelstokemountainresort.com

DATE: 2025-01-08

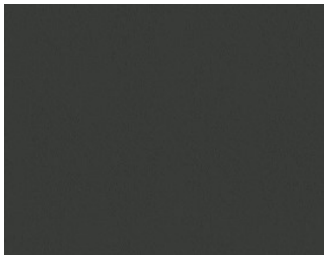
4 -MILLWORK

MW1 - CABINET DOOR/DRAWER (*Kitchen Uppers, Lovers, + bathroom vanities*)



STYLE: Slab Style Melamine Panel
INSIDE PROFILE: N/A
OUTSIDE PROFILE: Square
COLOUR/FINISH: HPL L05 Omnia Natura
BRAND: Uniboard Panels
DIMENSIONS: 3/4" thk. Door and drawer fronts
NOTES: Can be subbed with alternate/preferred brand equivalent
***Please supply any alternate product sample to designers for approval
vertical grain direction

MW2 - CABINET DOOR/DRAWER (*Island, Peninsula cabinets + Hood fan*)



STYLE: Slab style textured melamine
INSIDE PROFILE: N/A
OUTSIDE PROFILE: Square
COLOUR/FINISH: Charcoal (123) Supermat Finish
BRAND: Uniboard Panels
NOTES: Smooth Finish
***Please supply any alternate product sample to designers for approval

HOOD FAN DETAIL



STYLE: Recessed/Built-In style hood fan
HOOD: 36"W built in hood fan (square shape, no taper)
HOOD FINISH: MW2

5 -HARDWARE

HW1 - CABINET PULLS (*Lowers*)



NAME: Modern Metal Pull - 873
COLOUR/FINISH: Matte Black
BRAND: Richelieu
CODE: BP873192900
DIMENSIONS: 7-15/16" overall
QTY: Millworker to Perform Takeoff's

HW2 - CABINET KNOBS (*Uppers*)



NAME: Modern Metal Knob - 2363
COLOUR/FINISH: Matte Black
BRAND: Richelieu
CODE: BP236332900
DIMENSIONS: 1-1/4"diam
QTY: Millworker to Perform Takeoff's



CLIENT: Northland Properties - Benchlands Condos

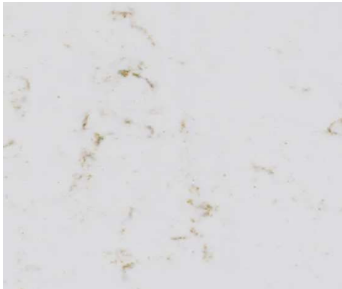
EMAIL lmcintyre@revelstokemountainresort.com

DATE: 2025-01-08

Designer's Rep/Supplier: Lise Paradis @ HanStone - lparadis@hanstone.ca

6 - COUNTERS

CT1 - QUARTZ COUNTERS



NAME: Engineered Quartz
COLOUR/FINISH: Whistler Gold - Polished Finish
BRAND: HanStone Quartz
DIMENSIONS: 3cm THK.
NOTES: Square Edge
***Please supply any alternate product sample to designers for approval



CT1 - KITCHEN COUNTER WATERFALL (*Island or peninsula*)



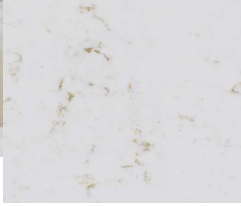
NAME: Engineered Quartz
COLOUR/FINISH: Whistler Gold - Polished Finish
BRAND: HanStone Quartz
DIMENSIONS: See drawings for details - 3cm thk.
NOTES: Square Edge
NOTES: Waterfall detail on both sides of island or on end of peninsula
***Please supply any alternate product sample to designers for approval



CT1 - QUARTZ BACKSPLASH (*Bathrooms*)



NAME: Engineered Quartz
COLOUR/FINISH: Whistler Gold - Polished Finish
BRAND: HanStone Quartz
DIMENSIONS: 3cm THK. - approx. 6" height (to be confirmed w/ drawings)
NOTES: Square Edge
NOTES: Backsplash to run along back wall of vanity only.
***Please supply any alternate product sample to designers for approval



CT1 - NICHE FRAMES *(Bathrooms)*

NAME: Engineered Quartz
COLOUR/FINISH: Whistler Gold - Polished Finish
BRAND: HanStone Quartz
DIMENSIONS: 3cm THK.
NOTES: Square Edge
NOTES: ***Please supply any alternate product sample to designers for approval



CT1 - SHOWER THRESHOLDS *(Bathrooms)*

NAME: Engineered Quartz
COLOUR/FINISH: Whistler - Polished Finish
BRAND: HanStone Quartz
DIMENSIONS: 3cm THK.
NOTES: Square Edge
NOTES: ***Please supply any alternate product sample to designers for approval



CLIENT: Northland Properties - Benchlands Condos

EMAIL: lmcintyre@revelstokemountainresort.com

DATE: 2025-01-08

Designer's Rep/Supplier: Lauren Valhalla @ Splashes/Andrew Sheret Salmon Arm - lauren.valhalla@sheret.com

7 - PLUMBING



KITCHEN FAUCET

NAME: Odin Pull-Down Faucet with Square Spout
COLOUR/FINISH: Matte Black
BRAND: Brizo
CODE: 63065LF-BLLHP + HLK175BL (handle)
DIMENSIONS: 14-5/8"H x 9"D x 3-1/8"W
QTY: Contractor to Perform Takeoff's



KITCHEN SINK

NAME: Precision U 2
COLOUR/FINISH: 18-gauge stainless steel
BRAND: Blanco
CODE: 400399
DIMENSIONS: 32"W x 18"D x 10"H
QTY: Contractor to Perform Takeoff's
NOTES: Undermount Install



VANITY SINK

NAME: Atherton Under Counter Lavatory
COLOUR/FINISH: Cotton White - Black Drain
BRAND: Toto
CODE: LT221#01
DIMENSIONS: 17"W x 13"D x 4"D
QTY: Contractor to Perform Takeoff's



BATHROOM FAUCET

NAME: Jason Wu for Brizo Single-Handle Lavatory Faucet
COLOUR/FINISH: Matte Black
BRAND: Brizo
CODE: 65175LF-BL
QTY: Contractor to Perform Takeoff's

STANDARD SHOWER SYSTEM



NAME: Essential Shower Series -
1 Linear Round Slide Bar With Hose
2 Linear Round H2Okinetic Single Function Handshower
3 16" Linear Round Wall Mount Shower Arm And Flange
4 12" Linear Round Single-Function Raincan Shower Head
5 Jason Wu for Brizo Pressure Balance Valve with Integrated 3-Function Diverter Trim

COLOUR/FINISH: Matte Black
BRAND: Brizo
CODE: 1 74792-BL (Linear Round Slide Bar w/ Hose)
2 RP73147BL (handshower)
3 RP71648BL (shower arm and flange)
4 81392-BL (rain shower head)
5 T75P575-BLLHP (trim) + HL75P75-BL (handles) + R75000 (rough)

QTY: Contractor to Perform Takeoff's
Valve mounted on a different wall than fixtures are located - see

NOTES: drawings for detail

STANDARD TUB/SHOWER SYSTEM



NAME: Essential Shower Series -
1 Linear Round Slide Bar With Hose
2 Linear Round H2Okinetic Single Function Handshower
3 16" Linear Round Wall Mount Shower Arm And Flange
4 12" Linear Round Single-Function Raincan Shower Head
5 Jason Wu for Brizo TempAssure Thermostatic Valve with Integrated 6-Function Diverter Trim
6 Linear Round Diverter Tub Spout

COLOUR/FINISH: Brilliance Luxe Nickel
BRAND: Brizo
CODE: 1 74792-BL (Linear Round Slide Bar w/ Hose)
2 RP73147BL (handshower)
3 RP71648BL (shower arm and flange)
4 81392-BL (rain shower head)
5 T75675-BL (trim) + R75000 (rough)
6 RP81438BL (tub spout)

QTY: Contractor to Perform Takeoff's
Valve mounted on a different wall than fixtures are located - see

NOTES: drawings for detail



ALCOVE TUB

NAME: Rubix 6032 Alcove Tub with Double Tiling Flange
COLOUR/FINISH: White
BRAND: Maax
CODE: 6452328 (Sheret code)
DIMENSIONS: 60"W x 32"D
QTY: Contractor to Perform Takeoff's
NOTES: Contractor to determine if RH or LH drain is required.

CURTAIN ROD



NAME: Straight Shower Rod - Round Blacking
COLOUR/FINISH: Matte Black (48)
BRAND: Kartners
CODE: KSR-5SS/KSR-6SS
QTY: Contractor to Perform Takeoff's
NOTES: Reach out to Lauren @ Splashes for rod



SHOWER DOOR

NAME: Custom Shower Glass w/ Sliding Door
COLOUR/FINISH: Matte Black Hardware
DIMENSIONS: Approx. 60"W x 77"H
QTY: Contractor to Perform Takeoff's
NOTES: Fixed door located on showerhead side.

TOILET



NAME: Nexus Elongated ADA Toilet Bowl w/ Tornado Flush, Nexus 4.8L
Toilet Tank and Soft Close Elongated Toilet Seat + Lid
COLOUR/FINISH: White
BRAND: Toto
CODE: 1061220 (Sheret code) Toilet Tank
1061210 Toilet Bowl
1060845 Seat
QTY: Contractor to Perform Takeoff's
NOTES: Order w/ Jason Wu for Brizo Front Mount Flush Lever in Matte Black 696075-BL

BATHROOM HARDWARE/ACCESSORIES

TOWEL BAR



NAME: Jason Wu for Brizo 24" Towel Bar
COLOUR/FINISH: Matte Black
BRAND: Brizo
CODE: 692475-BL
DIMENSIONS: 24" c to c
QTY: Contractor to Perform Takeoff's

HAND TOWEL HOOK



NAME: Litze 8" Towel Bar
COLOUR/FINISH: Matte Black / Brilliance Luxe Steel
BRAND: Brizo
CODE: 694735-BLSL
DIMENSIONS: 8" c to c
QTY: Contractor to Perform Takeoff's

TOWEL HOOK



NAME: Jason Wu for Brizo Single Robe Hook
COLOUR/FINISH: Matte Black
BRAND: Brizo
CODE: 693575-BL
QTY: Contractor to Perform Takeoff's

TISSUE HOLDER



NAME: Litze Tissue Holder
COLOUR/FINISH: Matte Black
BRAND: Brizo
CODE: 695035-BL
QTY: Contractor to Perform Takeoff's



CLIENT: Northland Properties - Benchlands Condos

EMAIL: lmcintyre@revelstokemountainresort.com

DATE: 2025-01-08

Designer's Rep/Supplier: Trish Wright @ Robinson Lighting Kelowna - Trishw@robinsonlighting.com

8 - LIGHTING + ELECTRICAL

L1 - POTLIGHTS



NAME: Standard 4" pot light
COLOUR/FINISH: White trim/case
BRAND: contractor/electrician preferred
DIMENSIONS: 4" Diam.
QTY: Electrician to Perform Takeoff's
NOTES: *3000K Colour temperature



L2 - KITCHEN ISLAND/PENINSULA LIGHT *(Only on applicable plans)*

NAME: Pedestal
COLOUR/FINISH: Balck
BRAND: Matteo
CODE: C71102BK
DIMENSIONS: Ø13 3/4" x 14 7/8"H
QTY: Contractor to Perform Takeoff's (2 per island or peninsula)

****No ceiling fixtures required in dining area *(Allows flexibility of dining table location)***



L3 - VANITY SCONCE

NAME: Odette
COLOUR/FINISH: Black / Clear Ribbed Glass
BRAND: Matteo Lighting
CODE: S05401BK
DIMENSIONS: 4 3/4"W x 16"H x 4 1/2"E
QTY: Contractor to Perform Takeoff's (1 per small vanity, 2 per large vanity)
Install on each side of mirror



L4 - CEILING LIGHT *(Entry or where required)*

NAME: Melotte
COLOUR/FINISH: Black & Opal Glass
BRAND: Matteo
CODE: WX63611BKOP
DIMENSIONS: 11 3/8"L x 11 1/4"W x 9 7/8"H
QTY: Contractor to Perform Takeoff's (As Required)

L5 - CEILING LIGHT (*Bedrooms*)



NAME: Sawyer Flush Mount
COLOUR/FINISH: Midnight Black
BRAND: Visual Comfort
CODE: KSF1043MBK
DIMENSIONS: 18" diam x 10.25"H
QTY: contractor to preform takeoff
NOTE: Contractor to Perform Takeoff's (1 per room)



L6- UNDER CABINET LIGHTING (*Kitchen*)

NAME: LED strip lighting
COLOUR/FINISH: LED light with frosted cover
DIMENSIONS: To run entire length of upper cabinets in kitchens
QTY: Contractor to Perform Takeoff's



CLIENT: Northland Properties - Benchlands Condos

EMAIL: lmcintyre@revelstokemountainresort.com

DATE: 2025-01-08

Designer's Rep/Supplier: Dimpy Sanghera @ City Furniture Revelstoke - cityfurniture Revelstoke@gmail.com

9 - APPLIANCES



RANGE *(Electric Option)*

NAME: 30-Inch 5-Element Electric Convection Front Control Range
COLOUR/FINISH: Stainless Steel
BRAND: KitchenAid
CODE: YKSEG700ESS
DIMENSIONS: 30"W x 36"H
QTY: Contractor to Perform Takeoff's



RANGE *(Induction Option)*

NAME: 30-Inch 4-Element Induction Slide-In Convection Range with Air Fry
COLOUR/FINISH: Stainless Steel
BRAND: KitchenAid
CODE: KSIS730PSS
DIMENSIONS: 30"W x 36"H
QTY: Contractor to Perform Takeoff's



FRIDGE

NAME: 22 cu.ft. 36-Inch Width Counter Depth French Door Refrigerator with Interior Dispense
COLOUR/FINISH: Stainless Steel
BRAND: KitchenAid
CODE: KRFC302ESS
DIMENSIONS: 72"H x 35-3/4"W x 30-1/4"D
QTY: Contractor to Perform Takeoff's

DISHWASHER



NAME: 44 dBA Dishwasher with 360° Max Jets™ Third Rack and LED Interior Lighting
COLOUR/FINISH: PrintShield Stainless
BRAND: KitchenAid
CODE: KDTM704KPS
DIMENSIONS: standard 24"W
QTY: Contractor to Perform Takeoff's

RECESSED HOOD FAN



NAME: Q2 30" Insert
COLOUR/FINISH: Stainless Steel
BRAND: Victory Range Hoods
DIMENSIONS: 29-1/8"W x 14-1/2"H x 15"D
QTY: Contractor to Perform Takeoff's
NOTE: Can customize CFM, venting size + venting direction

BUILT-IN MICROWAVE



NAME: 300 Series Built-in Microwave Oven 24"
COLOUR/FINISH: Stainless Steel
CODE: HMB30155UC
BRAND: Bosch
DIMENSIONS: 13 5/8" x 24 3/8" x 19 11/16"
QTY: Contractor to Perform Takeoff's

WASHER



NAME: 5.2 cu. Ft. Smart Front Load Energy Star Cert. Washer w/ FreshFlow Vent System
COLOUR/FINISH: Radiant Silver
BRAND: Whirlpool
CODE: WFW5720RR
DIMENSIONS: 31.56"D x 39"H x 27"W
QTY: Contractor to Perform Takeoff's

DRYER



NAME: 7.4 cu. Ft. Smart Front Load Energy Star Cert. Dryer w/ Wrinkle Shield Option
COLOUR/FINISH: Radiant Silver
BRAND: Whirlpool
CODE: YWED5720RR
DIMENSIONS: 31.56"D x 39"H x 27"W
QTY: Contractor to Perform Takeoff's



CLIENT: Northland Properties - Benchlands Condos

EMAIL: lmcintyre@revelstokemountainresort.com

DATE: 2025-01-08

10 - FIREPLACE



FIREPLACE *(Gas Option)*

NAME: LT1 Direct Vent Gas Fireplace
COLOUR/FINISH: Black
BRAND: Valor
CODE: 2500KN/KP
DIMENSIONS: 40" w x 17 1/2" h viewing area
QTY: Contractor to Perform Takeoff's
NOTES: Birch Logs (1505BLKV2) + Fluted Black Liner (2515FBL)
Install w/ 1" adjustable finishing trim



FIREPLACE *(Electric Option)*

NAME: Entice 42
COLOUR/FINISH: Black frame
BRAND: Napoleon
DIMENSIONS: 16.94-inches tall, 42-inches wide, and 5.4-inches deep
QTY: Contractor to Perform Takeoff's
NOTES: LED Lights, flames w/ ember bed + large crystal clear cubes



STONE

NAME: Quarry Ledge Stone
COLOUR/FINISH: Providence
BRAND: Pangaea Natural Stone Inc.
DIMENSIONS: Up to 16"L x Up to 8"H x Average 1-1/4" Thk.
QTY: Contractor to Perform Takeoff's
NOTES: Dry Stacked lay as shown
NOTES: No Mantel