

BENCHLANDS

RESIDENCES



BENCHLAND LODGE
AUGUST 2018

CONDOS

Benchlands Condos

Benchlands Condos is the newest addition to the master-planned Benchlands community, located just minutes from Revelstoke Mountain Resort and adjacent to the world-class Cabot Golf Course. Designed for those who seek an exceptional mountain lifestyle, this three-storey building offers 43 thoughtfully designed units that combine comfort, functionality, and modern elegance all in a setting that blends mountain adventure with premier golf experiences. Whether you're looking for a cozy one-bedroom retreat, a spacious two-bedroom escape, or a three-bedroom home for family and friends, Benchlands Condos has the perfect fit for you.

BEDROOMS

1 - 3

BATHROOMS

1 - 2

SQUARE FOOTAGE

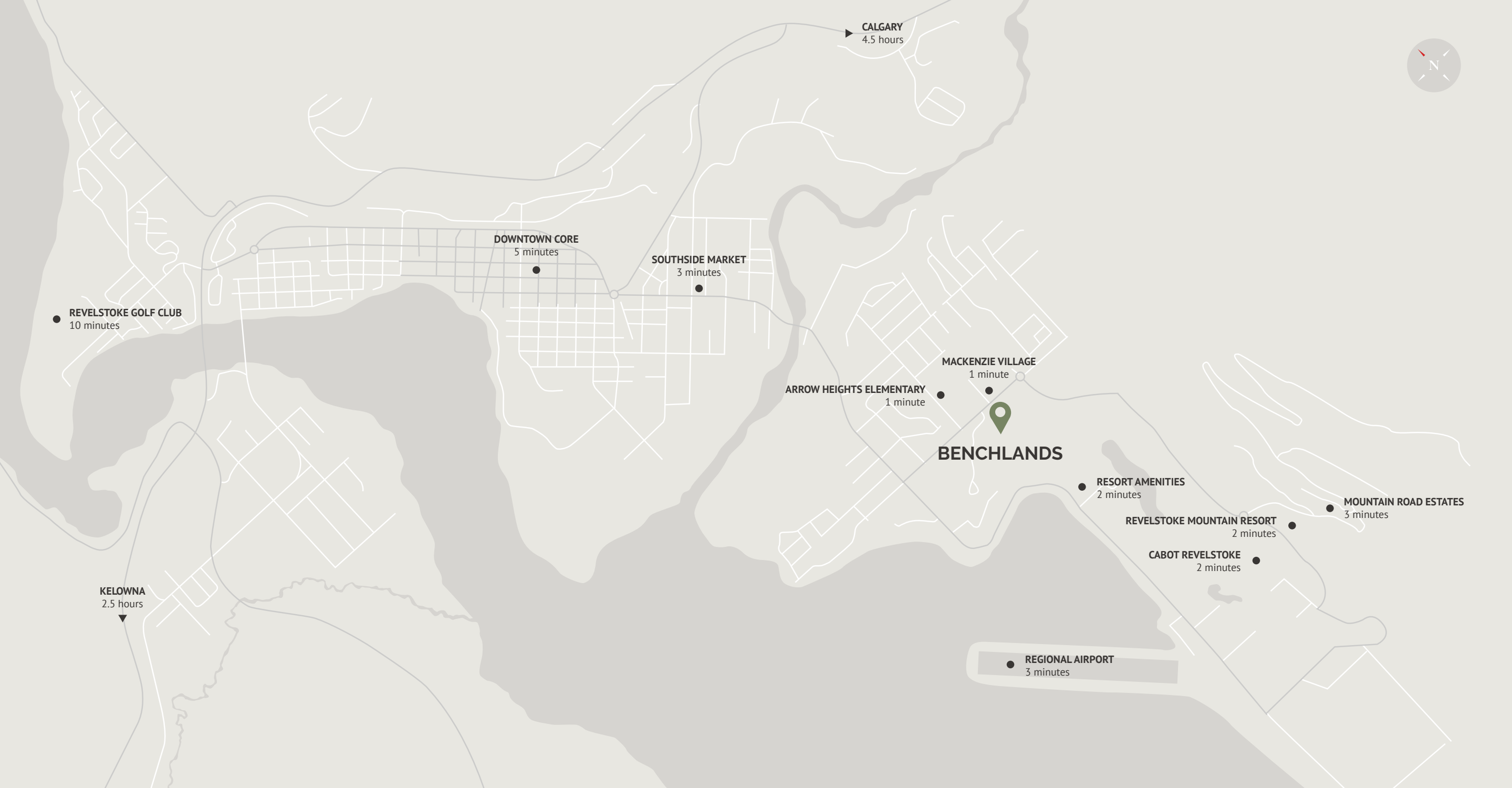
Approximately 525 - 1,436 SQ FT

For additional information about this property please contact realestate@revelstokemountainresort.com.





Revelstoke Map



1 BEDROOM

2 BEDROOM

3 BEDROOM

L = LOFT



LEVEL 1

UNIT #	UNIT TYPE	BEDS	BATHS	PRICE
1	1-01	1	1	\$550,000
2	1-01	1	1	\$580,000
3	1-01	1	1	\$600,000
4	3-03	3	2	\$1,200,000
5	2-01	2	2	\$1,000,000
6	1-01	1	1	\$600,000
7	1-01	1	1	\$600,000
8	1-01	1	1	\$600,000
9	1-01	1	1	\$600,000
10	3-01	3	2	\$1,200,000
11	1-01	1	1	\$600,000
12	2-02	2	2	\$1,200,000



LEVEL 2

UNIT #	UNIT TYPE	BEDS	BATHS	PRICE
13	2-03	2	2	\$960,000
14	2-04	2	2	\$850,000
15	1-02	1	1	\$730,000
16	1-01	1	1	\$630,000
17	1-02	1	1	\$750,000
18	1-01	1	1	\$650,000
19	3-04	3	2	\$1,250,000
20	2-06	2	2	\$950,000
21	2-03	2	2	\$960,000
22	2-04	2	2	\$870,000
23	1-02	1	1	\$700,000
24	1-01	1	1	\$630,000
25	1-02	1	1	\$730,000
26	3-02	3	2	\$1,150,000
27	1-01	1	1	\$650,000
28	2-05	2	2	\$1,100,000



LEVEL 3

UNIT #	UNIT TYPE	BEDS	BATHS	PRICE
29	3L-01	3	2	\$1,300,000
30	3L-02	3	2	\$1,230,000
31	2L-01	2	1	\$950,000
32	1L-01	1	1	\$850,000
33	2L-01	2	1	\$950,000
34	1L-01	1	1	\$850,000
35	3L-03	3	2	\$1,500,000
36	3L-01	3	2	\$1,300,000
37	3L-02	3	2	\$1,230,000
38	2L-01	2	1	\$950,000
39	1L-01	1	1	\$850,000
40	2L-01	2	1	\$950,000
41	3L-04	3	2	\$1,440,000
42	1L-01	1	1	\$850,000
43	3L-05	3	2	\$1,600,000

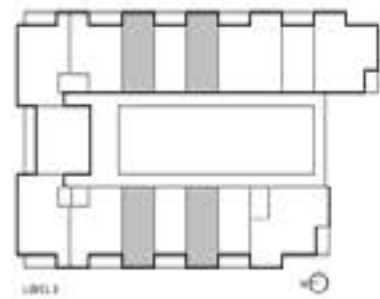
1 Bed Floorplans - 1-01

TYPE 1-01
525 Sq.Ft.



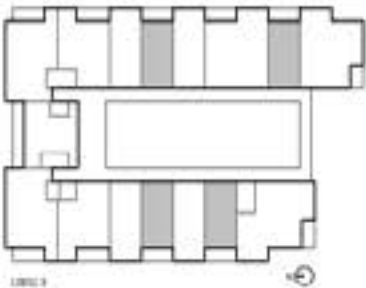
1 Bed Floorplans - 1-02

TYPE 1-02
640 Sq.Ft.



1 Bed Loft Floorplans - 1L-01

TYPE 1L-01
692 Sq.Ft.



LEVEL 3 | 525 Sq.Ft.



LOFT LEVEL | 167 Sq.Ft.

2 Bed Floorplans - 2-01

TYPE 2-01
1039 Sq.Ft.



2 Bed Floorplans - 2-02

TYPE 2-02
987 Sq.Ft.



2 Bed Floorplans - 2-03

TYPE 2-03
1007 Sq.Ft.



2 Bed Floorplans - 2-04

TYPE 2-04
827 Sq.Ft.



2 Bed Floorplans - 2-05

TYPE 2-05
1104 Sq.Ft.



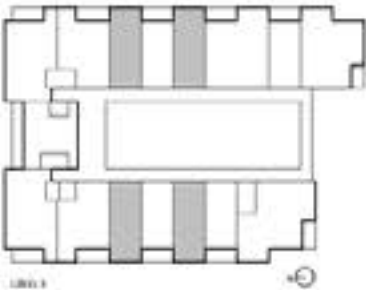
2 Bed Floorplans - 2-06

TYPE 2-06
886 Sq.Ft.

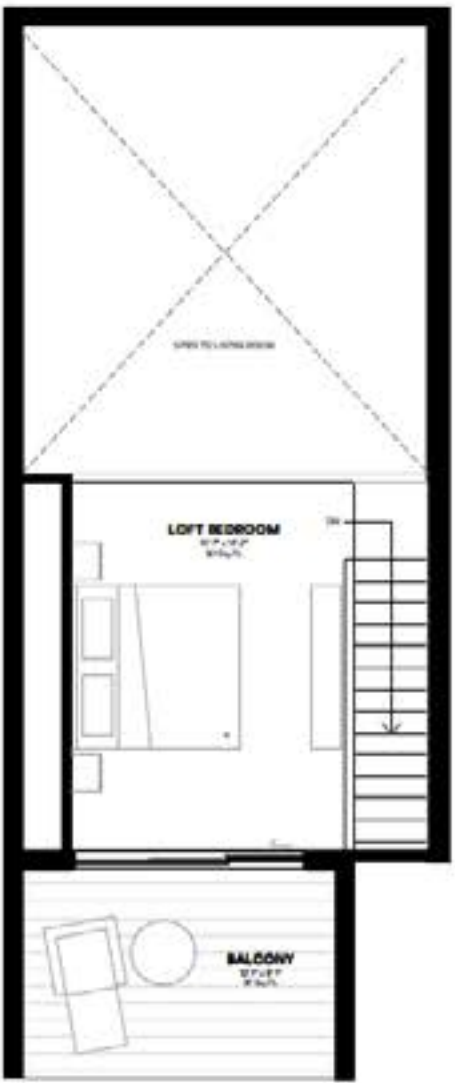


2 Bed Loft Floorplans - 2L-01

TYPE 2L-01
800 Sq.Ft.



LEVEL 3 | 640 Sq.Ft.



LOFT LEVEL | 160 Sq.Ft.

3 Bed Floorplans - 3-01

TYPE 3-01
1078 Sq.Ft.



3 Bed Floorplans - 3-02

TYPE 3-02
1193 Sq.Ft.



3 Bed Floorplans - 3-03

TYPE 3-03
1086 Sq.Ft.



3 Bed Floorplans - 3-04

TYPE 3-04
1203 Sq.Ft.

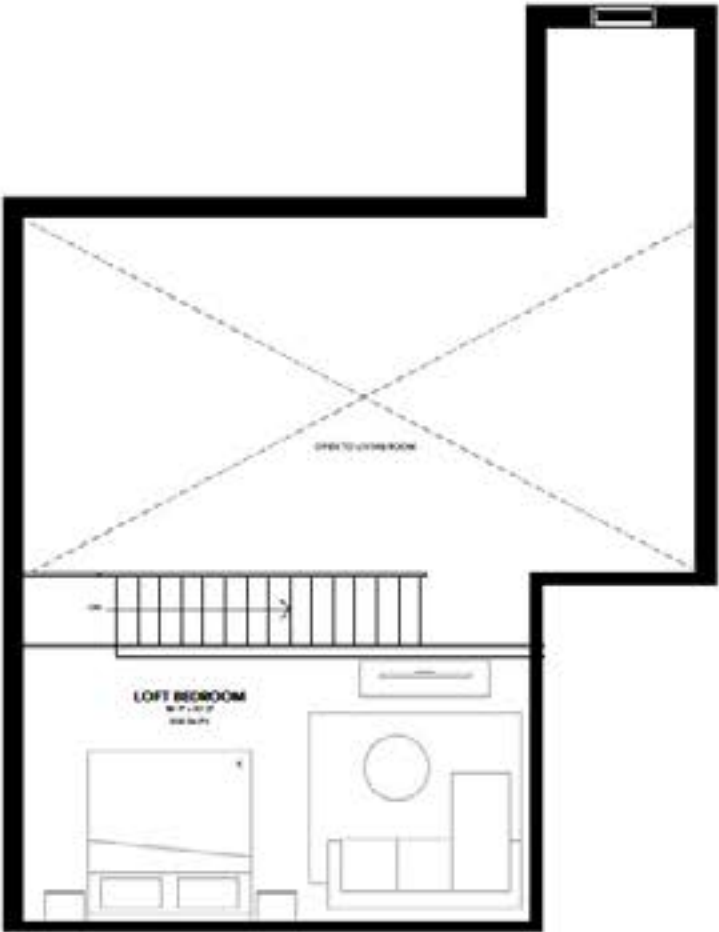


3 Bed Loft Floorplans - 3L-01

TYPE 3L-01
1215 Sq.Ft.



LEVEL 3 | 1007 Sq.Ft.



LOFT LEVEL | 208 Sq.Ft.

3 Bed Loft Floorplans - 3L-02

TYPE 3L-02
994 Sq.Ft.

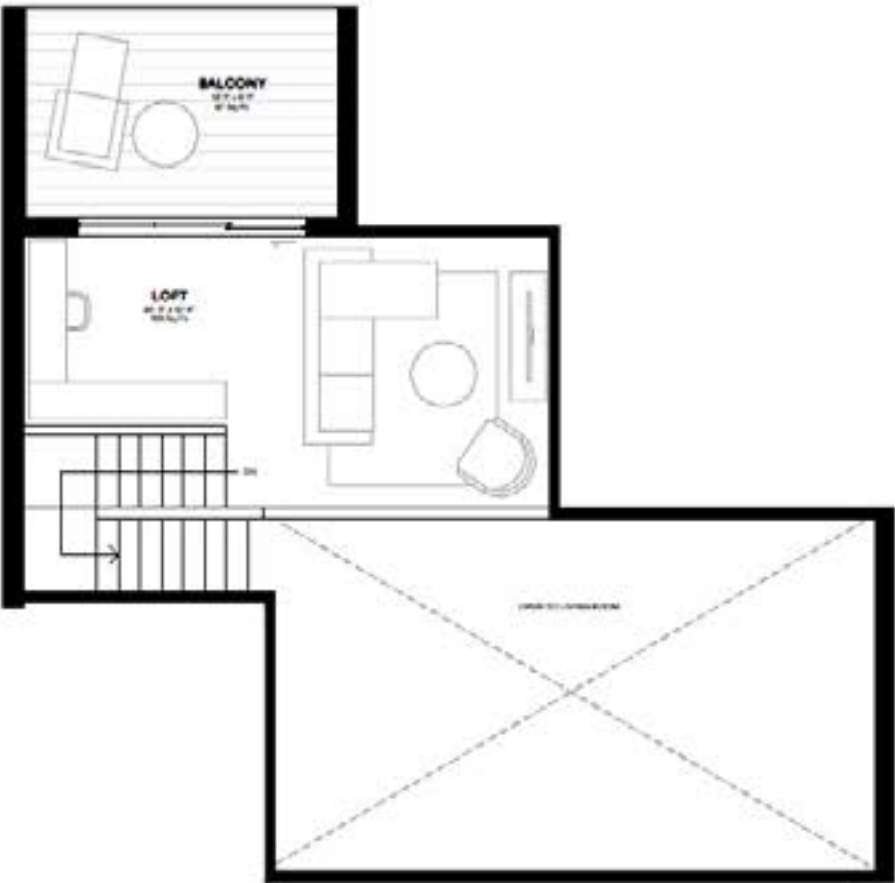


3 Bed Loft Floorplans - 3L-03

TYPE 3L-03
1399 Sq.Ft.



LEVEL 3 | 1203 Sq.Ft.



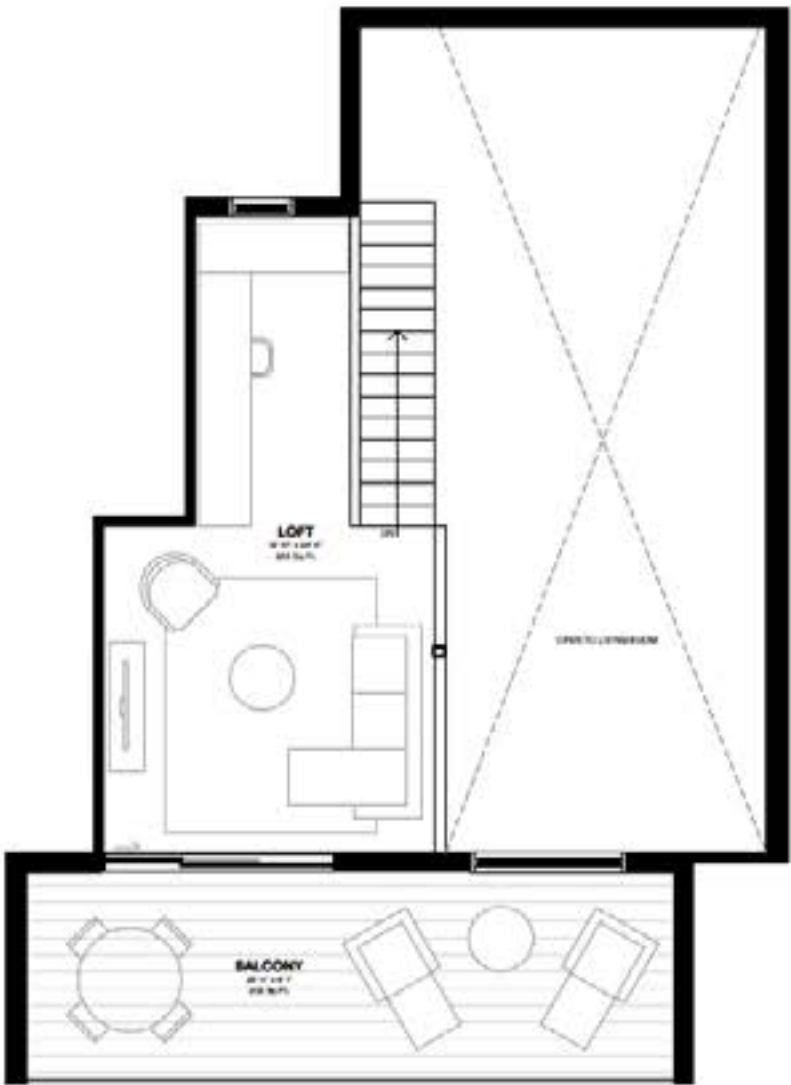
LOFT LEVEL | 196 Sq.Ft.

3 Bed Loft Floorplans - 3L-04

TYPE 3L-04
1436 Sq.Ft.



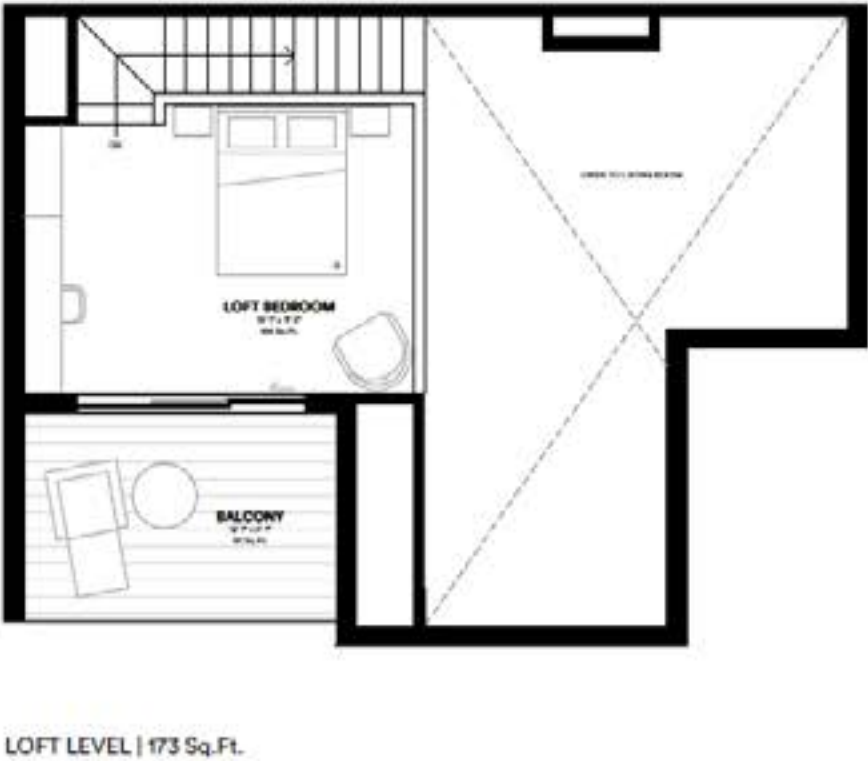
LEVEL 3 | 1193 Sq.Ft.



LOFT LEVEL | 243 Sq.Ft.

3 Bed Loft Floorplans - 3L-05

TYPE 3L-05
1277 Sq.Ft.



Neighbourhood Plan



Interior Design Package - Balsam



Interior Design Package - Juniper



Interior Design Package - Slate





Amenities

Relax, recharge, and connect at Benchlands Condos. Unwind in the top-floor spa with a hot tub, cold plunge, sauna, and cozy fireplace, or spend time in the main floor lounge featuring soft seating, a curated library, and a peaceful relaxation zone. Practical comforts include underground parking, storage lockers, and convenient bicycle parking—everything you need for life at the heart of Revelstoke Mountain Resort.

AMENITIES INCLUDE

- Top floor spa featuring hot tub, cold plunge, sauna and fireplace
- Main floor lounge
- Library
- Relaxation zones
- Underground parking
- Storage lockers
- Bicycle parking





Benchlands Residences

At Benchlands, our vision is to create a vibrant and inclusive community where residents can connect with nature, embrace outdoor adventures, and enjoy modern comforts. This is more than a place to live; it's a hub for active families, passionate adventurers, and those who value the perfect balance between recreation and relaxation. Beyond the opportunity to embrace a recreation-forward lifestyle in the mountains, Benchlands offers significant investment opportunities. Zoned to allow for short-term rentals, property owners have the option to join the Resort's rental management program, providing owners with a wealth of benefits.

Positioned minutes from Revelstoke Mountain Resort along Nichol Road, Benchlands Residences enjoys a prime location that balances tranquility with accessibility. Surrounded by the natural beauty of Revelstoke's mountains and forests, this community places you at the center of everything you need.

CONTACT

Nicky Sellinger
Senior Real Estate Specialist
nsellinger@revelstokemtn.com
778-252-8435

Dominik Hubaczek
Senior Real Estate Specialist
dhubaczek@revelstokemtn.com
403-397-5509

Suzanne Riegel
Managing Broker
sriegel@revelstokemtn.com
236-803-0071




REVELSTOKE
MOUNTAIN RESORT


Revelstoke
MOUNTAIN REALTY

These materials do not constitute an offer or solicitation of any kind, nor are they intended to be distributed in or constitute an offer to sell real estate or real estate securities to residents of any jurisdiction where prior registration, license, or advance qualification is required but not yet completed. Revelstoke Mountain Resort reserves the right to make changes, corrections, cancellations, and/or improvements to the content of these materials, and the products, services, and programs described herein at any time without notice, including after confirmation of a transaction. The images are subject to change as the design process evolves, as the drawings are conceptual in nature. All dimensions are approximate. All depictions of furniture, appliances, counters, soffits, floor coverings, and other matters of detail and/or specification, including, without limitation, items of finish and decoration, are representations only and are not necessarily items that are included in each unit.